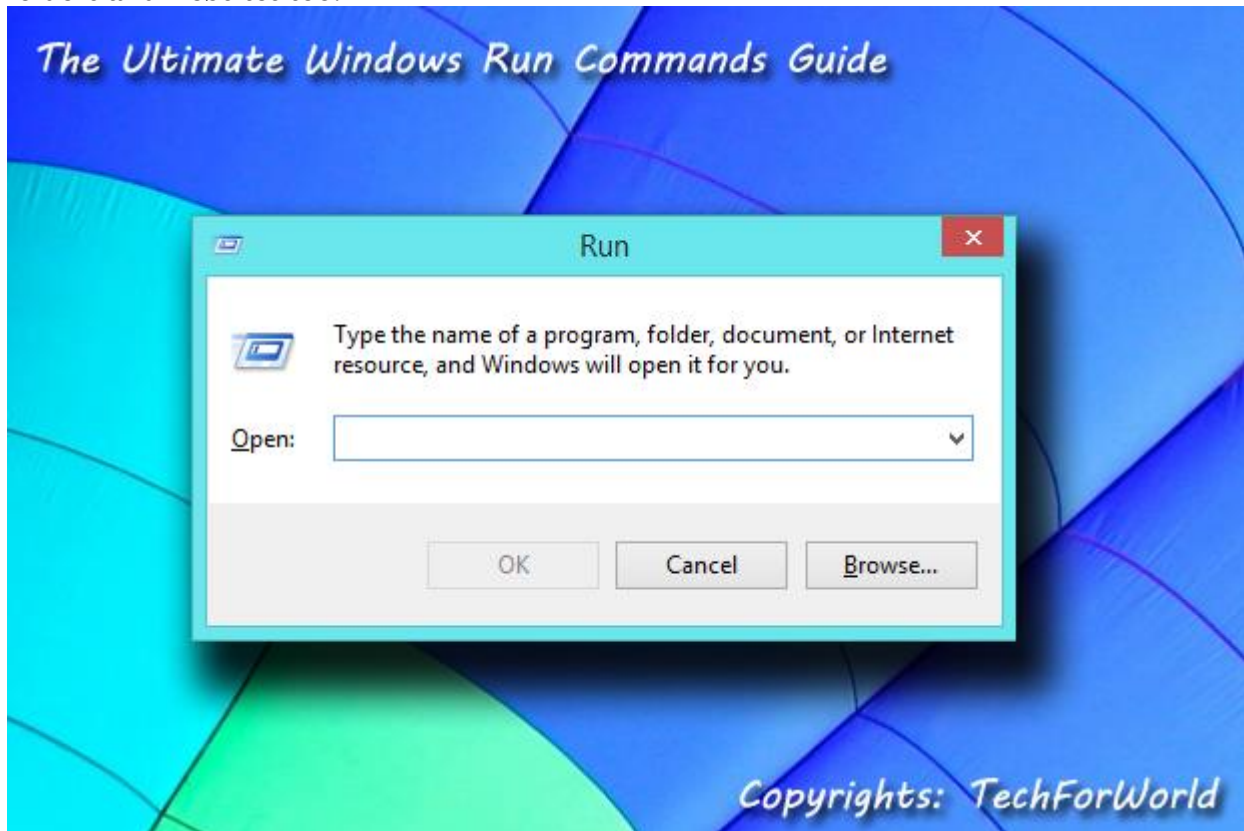


The Ultimate Windows Run Commands List & Tricks

By [Jignesh Rathod](#)

What is the easiest and fastest way to run or open something in Windows? Of course using the Run command. If you know Windows Run Commands for things you use frequently, you don't have to navigate through menus and search for it: Imagine how much time it would save you! Using Run commands is the fastest way to open programs, files, folders and websites too.



How to Use a Run Command?

There are multiple ways you can use Windows Run commands.

1. You can simply press Windows+R key and type the command.
2. In Windows 8 it's even easier, you have to only press Windows key to see the Start Screen and start typing. In fact in modern Windows, Run is replaced by Start Screen which serves as a multi-purpose tool.
3. You can also use a Run command in [Command Prompt](#) window.
4. You can also create a shortcut file for a command by right clicking in a folder or desktop

and choose New -> Shortcut. (I noticed that this doesn't work for some commands)
5. You can also press **Windows+X** to see Windows Power User menu and choose 'Run'. (for Windows 8.1)

Twin Article:

[The Most Useful Windows Commands You Must Know](#)

How to Create Your Own Run Command

A Run command is simply the name of the file used to execute a program. You can easily create your own Windows Run commands.

1. Create a shortcut of the program, file, folder or even any website link you want to create a Run command for.
2. Rename the shortcut to the command name you want to give.
3. Copy or move that shortcut to **Windows** folder. You can directly open *Windows* folder by running command *%Windir%*. Now you can easily access the shortcut you created from anywhere!

The Ultimate Windows Run Commands List

Here is the list of useful Windows Run commands which will make your life much easier. Please note that some of the commands may not work on your system depending on if a program is installed on your system, e.g. winword, powerpnt, mshearts, etc.

Accessibility Controls	access.cpl
Accessibility Wizard	accwiz
Add Features to Windows 8	windowsanytimeupgradeui
Add Hardware Wizard	hdwwiz
Add/Remove Programs	appwiz.cpl
Administrative Tools	control admintools
Advanced User Accounts	netplwiz or control userpasswords2
Authorization Manager	azman

Automatic Updates	wuauclpl.cpl
Backup and Restore	sdclt
Bluetooth File Transfer	fsquirt
Buy a Product Key Online	purchasewindowslicense
Calculator	calc
Certificate Manager	certmgr.msc
Certificates	certmgr or certlm
Change Printer Settings	printui
Character Map	charmap
Check Disk Utility	chkdsk
ClearType Tuner	cttune
Clipboard Viewer	clipbrd
Color Management	colorcpl
Command Prompt	cmd
Component Services	dcomcnfg or comexp
Computer Management	compmgmt.msc or CompMgmtLauncher
Connect to a Network Projector	netproj
Control Panel	control
Create A Shared Folder Wizard	shrpubw
Create a System Repair Disc	recdisc

Credential Backup and Restore Wizard (Manage stored User Names and passwords)	credwiz
Data Execution Prevention	systempropertiesdataexecutionprevention
Date and Time Properties	timedate.cpl
DDE Shares	ddeshare
Device Manager	devmgmt.msc or hdwwiz.cpl
Device Pairing Wizard (Add a Device)	devicepairingwizard
Digitizer Calibration Tool	tabcal
Direct X Control Panel (if installed)*	directx.cpl
DirectAccess Properties	daprop
DirectX Diagnostic Tool/Troubleshooter	dxdiag
Disk Cleanup Utility	cleanmgr
Disk Defragment	dfrg.msc
Disk Defragmenter	dfrgui
Disk Management	diskmgmt.msc
Disk Partition Manager	diskpart
Display	dpiscaling
Display Color Calibration	dccw
Display Properties	control desktop or desk.cpl
Display Properties (w/Appearance Tab Preselected)	control color

Dr. Watson System Troubleshooting Utility	drwtsn32
Driver Package Installer	dpinst
Driver Verifier Utility	verifier
Ease of Access Center	utilman
EFS REKEY Wizard	rekeywiz
Encrypting File System Wizard	rekeywiz
Event Viewer	eventvwr or eventvwr.msc
Fax Cover Page Editor	fxscover
File History	filehistory
File Signature Verification Tool	sigverif
Files and Settings Transfer Tool	migwiz
Findfast	findfast.cpl
Flash Player Settings Manager	flashplayerapp
Folders Properties	folders
Font Viewer	fontview
Fonts	control fonts
Fonts Folder	fonts
Free Cell Card Game	freecell
Game Controllers	joy.cpl
Group Policy Editor (XP Prof)	gpedit.msc

Hearts Card Game	mshearts
Help and Support	helpctr
HyperTerminal	hypertrm
IExpress Wizard	iexpress
Indexing Service	ciadv.msc
Install or Uninstall Display Languages	lusrmgr
Internet Connection Wizard	icwconn
Internet Explorer	iexplore
Internet Properties	inetcpl.cpl
Internet Setup Wizard	inetwiz
IP Configuration (Delete DNS Cache Contents)	ipconfig /flushdns
IP Configuration (Display Connection Configuration)	ipconfig /all
IP Configuration (Display DHCP Class ID)	ipconfig /showclassid
IP Configuration (Display DNS Cache Contents)	ipconfig /displaydns
IP Configuration (Modifies DHCP Class ID)	ipconfig /setclassid
IP Configuration (Refreshes DHCP & Re-Registers DNS)	ipconfig /registerdns
IP Configuration (Release All Connections)	ipconfig /release
IP Configuration (Renew All Connections)	ipconfig /renew
iSCSI Initiator Configuration Tool	iscsicpl
Java Control Panel (if installed)	javaws

Keyboard Properties	control keyboard
Language Pack Installer	lpksetup
Local Group Policy Editor	gpedit
Local Security Policy	secpol
Local Security Settings	secpol.msc
Local Users and Groups	lusrmgr.msc
Location Activity	locationnotifications
Logs You Out Of Windows	logoff
Magnifier	magnify
Make changes to your user account	control userpasswords
Malicious Software Removal Tool	mrt
Manage Your File Encryption Certificates	rekeywiz
Math Input Panel	mip
Microsoft Access (if installed)	msaccess
Microsoft Chat	winchat
Microsoft Excel (if installed)	excel
Microsoft Management Console	mmc
Microsoft Movie Maker	moviemk
Microsoft Powerpoint (if installed)	powerpnt
Microsoft Support Diagnostic Tool	msdt

Microsoft Synchronization Tool	mobsync
Microsoft Word (if installed)	winword
Minesweeper Game	winmine
Mouse Properties	control mouse or main.cpl
NAP Client Configuration	napclcfg
Narrator	narrator
Netmeeting	conf
Network Connections	control netconnections or ncpa.cpl
Network Setup Wizard	netsetup.cpl
New Scan Wizard (Windows Picture Acquisition Wizard)	wiaacmgr
Notepad	notepad
Object Packager	packager
ODBC Data Source Administrator	odbcad32 or odbccp32.cpl
ODBC Driver Configuration	odbcconf
On-Screen Keyboard	osk
Outlook Express	msimn
Paint	mspaint or pbrush
Password Properties	password.cpl
Performance Monitor	perfmon or perfmon.msc
Performance Options	systempropertiesperformance

Phone and Modem Options	telephon.cpl
Phone Dialer	dialer
Pinball Game	pinball
Power Configuration	powercfg.cpl
Presentation Settings	presentationsettings
Print Management	printmanagement
Printer Migration	printbrmui
Printers and Faxes	control printers
Printers Folder	printers
Private Character Editor	eudcedit
Programs and Features	appwiz.cpl
Protected Content (DPAPI Key) Migration	dpapimig
Recovery Drive	recoverydrive
Refresh Your PC	systemreset
Regional Settings	intl.cpl
Registry Editor	regedit or regedt32
Remote Access Phonebook	rasphone
Remote Desktop Connection	mstsc
Removable Storage	ntmsmgr.msc
Removable Storage Operator Requests	ntmsoprq.msc

Resource Monitor	resmon or perfmon /res
Resultant Set of Policy	rsop
Resultant Set of Policy (XP Prof)	rsop.msc
Scanners and Cameras	sticpl.cpl
Scheduled Tasks	control schedtasks
Security Center	wscui.cpl
Services	services.msc or services
Set Program Access and Computer Defaults	computerdefaults
Shared Folders	fsmgmt.msc
Shuts Down Windows	shutdown
Snipping Tool	snippingtool
Sound Recorder	soundrecorder
Sound Volume/Mixer	sndvol
Sounds and Audio	mmsys.cpl
Spider Solitaire Card Game	spider
SQL Client Configuration	cliconfg
Steps Recorder	psr
Sticky Notes	stikynot
Switch Display (Connect to a Projector)	displayswitch
System Configuration Editor	sysedit

System Configuration Utility	msconfig
System File Checker Utility (Purge File Cache)	sfc /purgecache
System File Checker Utility (Return Scan Setting To Default)	sfc /revert
System File Checker Utility (Scan Immediately)	sfc /scannow
System File Checker Utility (Scan On Every Boot)	sfc /scanboot
System File Checker Utility (Scan Once At The Next Boot)	sfc /scanonce
System File Checker Utility (Sets Cache Size to size x)	sfc /cachesize=x
System Information	msinfo32
System Properties	sysdm.cpl
System Properties (Advanced Tab)	systempropertiesadvanced
System Properties (Computer Name Tab)	systempropertiescomputername
System Properties (Hardware Tab)	systempropertieshardware
System Properties (Remote Tab)	systempropertiesremote
System Properties (System Protection Tab)	systempropertiesprotection
System Restore	rstrui
Task Manager	taskmgr or launchtm
Task Scheduler	taskschd
TCP Tester	tcpstest
Telnet Client	telnet

Touch Keyboard and Handwriting Panel	tabtip
Trusted Platform Module (TPM) Management	tpm
User Account Control Settings	useraccountcontrolsettings
User Account Management	nusrmgr.cpl
Windows Activation Client	slui
Windows Anytime Upgrade Results	windowsanytimeupgraderesults
Windows Contacts/Address Book	wab
Windows Contacts/Address Book Import Utility	wabmig
Windows Disc Image Burning Tool	isoburn
Windows Explorer	explorer
Windows Fax and Scan	wfs
Windows Features	optionalfeatures
Windows Firewall	firewall.cpl
Windows Firewall with Advanced Security	wf
Windows Help and Support	winhlp32
Windows Journal	journal
Windows Management Infrastructure	wmimgmt.msc
Windows Media Player	dvdplay or wmpplayer
Windows Memory Diagnostic Scheduler	mdsched
Windows Messenger	msmsgs

Windows Mobility Center	mblctr
Windows Picture Import Wizard (need camera connected)	wiaacmgr
Windows PowerShell	powershell
Windows PowerShell ISE	powershell_ise
Windows Remote Assistance	msra
Windows Script Host	wscript
Windows SmartScreen	smartscreensettings
Windows Store Cach Clear	wsreset
Windows System Security Tool (Securing the Windows Account Database)	syskey
Windows Update	wuapp
Windows Update Launches	wupdmgr
Windows Update Standalone Installer	wusa
Windows Version Information	winver
Windows XP Tour Wizard	tourstart
WMI Management	wmimgmt
WMI Tester	wbemtest
Wordpad	write
XPS Viewer	xpsrchvw

Shell Commands

Shell commands provide access to Windows special folders. You can find list and settings for all Shell folders in Windows Registry at HKEY_LOCAL_MACHINE\SOFTWARE\Microsoft\Windows\CurrentVersion\explorer\FolderDescriptions (In Windows XP, HKEY_CURRENT_USER\Software\Microsoft\Windows\CurrentVersion\Explorer\Shell Folders).

Internet Explorer	
Cookies	shell:Cookies
Cookies\Low	shell:Cookies\Low
Favorites	shell:Favorites
Internet Explorer – 32-bit	shell:InternetFolder
Temporary Internet Files	shell:Cache
Library	
Libraries	shell:Libraries
Libraries	shell:UsersLibrariesFolder
Libraries – Documents	shell:documentsLibrary
Libraries – Music	shell:MusicLibrary
Libraries – Pictures	shell:PicturesLibrary
Libraries – Videos	shell:VideosLibrary
Public Libraries	Shell:PublicLibraries
Multimedia	
Music	shell:My Music

Music (all users)	shell:CommonMusic
Pictures	shell:My Pictures
Pictures (all users)	shell:CommonPictures
Sample Music	shell:SampleMusic
Sample Pictures	shell:SamplePictures
Sample Videos	shell:SampleVideos
Videos	shell:My Video
Videos (all users)	shell:CommonVideo
System	
Administrative Tools	shell:Administrative Tools
Administrative Tools (all users)	shell:Common Administrative Tools
All User profiles folder	shell:UserProfiles
Computer	shell:MyComputerFolder
Control Pane – Network Connections	shell:ConnectionsFolder
Control Panel	shell:ControlPanelFolder
Control Panel – Get Programs	shell:AddNewProgramsFolder
Control Panel – Programs and Features	shell:ChangeRemoveProgramsFolder
Desktop (all users)	shell:Common Desktop
Device Metadata Store	shell:device Metadata Store
Documents (all users)	shell:Common Documents

Downloads (all users)	shell:CommonDownloads
Fonts	shell:Fonts
GameExplorer	shell:PublicGameTasks
Games	shell:Games
Homegroup	Shell:HomeGroupFolder
Installed Updates	shell:AppUpdatesFolder
Network	shell:NetworkPlacesFolder
Printers	shell:PrintersFolder
Program Files	shell:ProgramFilesX64
Program Files (x86)	shell:ProgramFilesX86
Program Files (x86) – Common Files	shell:ProgramFilesCommonX86
Program Files – Common Files	shell:ProgramFilesCommon
Program Files – Common Files	shell:ProgramFilesCommonX64
Program Files folder	shell:ProgramFiles
ProgramData (all users)	shell:Common AppData
Public folder	shell:Public
Public Suggested Locations	shell:PublicSuggestedLocations
Recycle Bin	shell:RecycleBinFolder
Resources	shell:ResourceDir
Ringtones (all users)	shell:CommonRingtones

search-ms:	shell:SearchHomeFolder
Start Menu (all users)	shell:Common Start Menu
Start Menu – Programs (all users)	shell:Common Programs
Startup (all users)	shell:Common Startup
System32 or System Folder	shell:System
SysWOW64	shell:SystemX86
Templates (all users)	shell:Common Templates
Windows folder	shell:Windows
Windows Sidebar – Gadgets	shell:Gadgets
Windows Sidebar – Gadgets	shell:default Gadgets
User	
App Data – LocalLow	shell:LocalAppDataLow
AppData – Local	shell:Local AppData
AppData – Roaming	shell:AppData
AppData – Roaming – Credentials	shell:CredentialManager
Contacts	shell:Contacts
Current User folder	shell:Profile
Current User folder	shell:UsersFilesFolder
Desktop	shell:desktop
Documents	shell:Personal

Downloads	shell:downloads
Internet Explorer – Quick Launch	shell:Quick Launch
Internet Explorer – User Pinned	shell:User Pinned
Links	shell:Links
Microsoft Crypto	shell:CryptoKeys
Network Shortcuts	shell:NetHood
Protect	shell:dpapiKeys
Recent items	shell:Recent
Ringtones	shell:Ringtones
Saved Games	shell:SavedGames
Searches	shell:Searches
SendTo locations	shell:SendTo
Start Menu	shell:Start Menu
Start Menu Programs	shell:Programs
Startmenu – Startup items	shell:Startup
SystemCertificates	shell:SystemCertificates
Templates	shell:Templates
Temporary Disk Burning Folder	shell:CD Burning
Windows Game Explorer	shell:GameTasks
Windows History	shell:History

Windows Printer Shortcuts	shell:PrintHood
Windows Sync	
Sync Center	shell:SyncCenterFolder
Sync Center – Conflicts	shell:ConflictFolder
Sync Center – Sync Results	shell:SyncResultsFolder
Sync Center – Sync Setup	shell:SyncSetupFolder

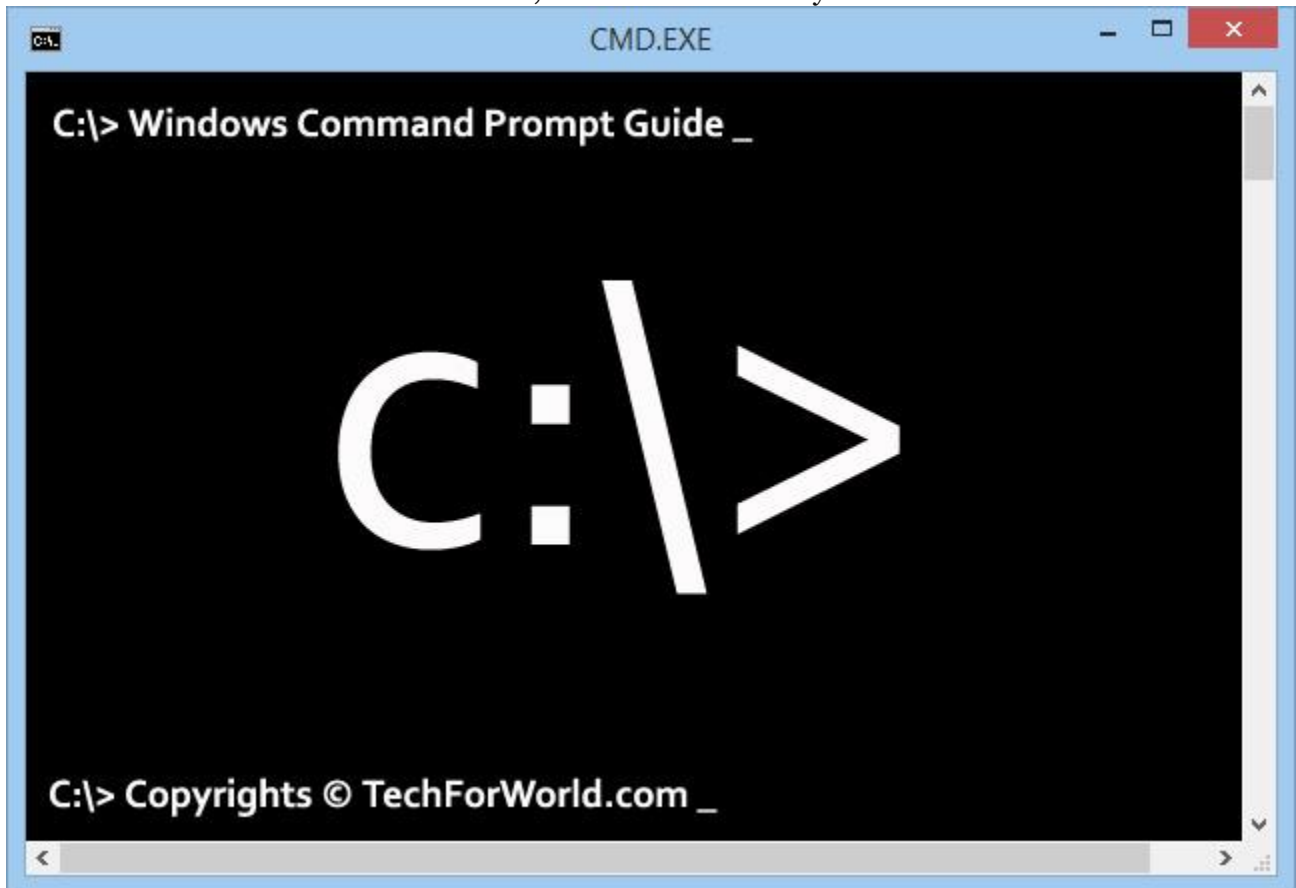
Note:

Commands in **Magenta** color work only in [Command Prompt](#).

Most Useful Windows Commands You Must Know

By [Jignesh Rathod](#), [TechForWorld](#)

Command Prompt a command line interpreter application in your Windows computer used to execute commands and perform advanced administrative functions. Its official name is Windows Command Processor, and its also called by its file name 'cmd.exe'.



Command Prompt is Not DOS!

Most people think Command Prompt and MS-DOS (Microsoft Disk Operating System) are same. Command Prompt is only a program in Windows Oses which is used to run commands or batch of commands.

MS-DOS was an x86-based operating system used for personal computers. Your modern Windows PC doesn't work on DOS– it is not even having DOS at all!

Open Command Prompt

There are multiple ways you can access Command Prompt in Windows.

1. Press Windows+R to open Windows Run dialogue box, type **CMD** and hit enter.

2. Press Windows+S in Windows 8, type **CMD** and press **Enter**.

Press **Control+Shift+Enter** instead of Enter to open Command Prompt in *Administrator mode*.

Some of the commands are allowed only in *Administrator mode*.

3. Right click on Start button at bottom left (Windows 8.1) and it will popup a menu with useful Windows options. You can select *Command Prompt* or *Command Prompt (Admin)* from that.

See Help on Any Command

One thing I love about Command Prompt is that it provides very useful in-built help.

1. Type HELP to see a list of all commands supported in current Windows version your computer is running.

2. Type HELP [Command Name] or **[Command Name]/?** to see help on specific command.

For example **HELP CLS** or **CLS/?** will show you what *cls* command does.

Tips

1. Previously Used Commands:

Press up and down arrow keys to cycle through previously used commands. You can also edit the command any time using left and right arrow keys.

2. Abort a Command:

Use **Control+C** to abort any command any time.

3. Copy Text from Command Window:

You can copy text from command window. Right click on Command Prompt window and select 'Mark'. Now select text using your mouse, and you can paste it to any program.

4. Auto-complete File Names:

Use Tab key to automatically show file or folder name in the current directory. For example, type **CD C:\Windows** and keep pressing tab key to see names of all directories and files within that folder.

5. Paste Text in Command Prompt:

Right click on the Command Prompt window and select 'Paste' to copy text or command from clipboard.

You can also drag and drop any file or folder inside the Command Prompt window to quickly copy its path.

6. Open cmd Directly in a Directory:

Press Shift key and right click on any folder and you can use '*open command window here*' to directly open the Command Prompt within that directory.

7. Select Command from History:

Press F7 key to see a list of previously executed commands and select from them.

Useful Windows Commands

You can easily find list of *all* Windows commands on internet, but the purpose of this post is to list out very useful Windows commands which can do great work for you.

ASSOC – Display or Change file extension association

ASSOC .txt (View file associatoin)

ASSOC .log=txtfile (Add a file association)

ASSOC .html= (Delete an association)

ASSOC .EXE=exefile (Repair .EXE file associations)

ASSOC .REG=regfile (Repair .REG file associations)

ATTRIB – Display or Change file attributes

ATTRIB +R -H (Set all files in current directory read-only and not hidden)

ATTRIB +R Z:*.txt (Process particular file or files in given path)

/S (Process files in all sub-folders too)

/D (Process folders too)

BCDEDIT – Sets properties in boot database to control boot loading

BOOTCFG – Edit Windows boot settings

BREAK – Sets or clears extended CTRL+C checking

CALL – Call one batch program from another

CD – Displays the name of or changes the current directory

CD D:\Software (Change to particular directory)

CD /D D:\Software (Change current drive also)

CD "D:\My Software" (Directory name with space)

CD .. (Change to parent directory)

CD ../.. (Change to grand parent directory)

CD \ (Change to root directory)

CD D:\My [Press Tab key] (Auto complte/suggest directory name)

ECHO "%CD%" (Display the current drive and directory)

CHDIR – Displays the name of or changes the current directory

See its synonym **CD**

CHKDSK – Check and repair disk problems

CHKNTFS – Displays or modifies the checking of disk at boot time

CHOICE – Accept keyboard input to a batch file

CIPHER – Encrypt or Decrypt files/folders

CLEANMGR – Open Windows Disk cleanup tool

CLIP – Copy command output or content of a file to the Windows clipboard

DIR | CLIP

DATE /T | CLIP

CLIP < filename.txt (Copy a file content to clipboard)

CLS – Clear the screen

CMD – Start a new CMD shell

CMDKEY – Manage stored usernames/passwords

COLOR – Change text and background color of screen

COLOR A (Change text color to light green (A))

COLOR 8A (Change background color to gray (8) and text color to light green (A))

COLOR (Reset to default colors – black background and white text)

COMP – Compare contents of files

COMP “file1.txt” “file2.txt” (Works when size of both files are same)

COMP “file1.txt” “file2.txt” /N=50 (Compare first 50 lines. Use this if both file sizes are different)

/C (Do a case insensitive string comparison)

COMPACT – Displays or modify the compression of files on NTFS disk

CONVERT – Convert a FAT drive to NTFS

CONVERT X: /FS:NTFS /V (Convert drive X to NTFS and show all messages during the process)

COPY – Copy file(s) to another location

COPY “file.txt” “file_copy.txt”

COPY “D:*.txt” “D:\combined.txt” (Combine all text files into one)

COPY *.* “D:\Backup” (Copy all files to a location)

COPY "file.txt" "file_copy.txt">nul (Copy silently, no messages on screen)

/Y Suppress confirmation prompt to overwrite existing files

/-Y Enable confirmation prompt to overwrite existing files

DATE – Display or change current system date.

DATE /T (Only output the current date, without asking to change)

DEFRAG – Optimize/defragment hard drive

DEL – Delete file(s) or directories.

DEL "filename.txt"

DEL A* (Delete all files starting with letter A)

DEL *.tmp (Delete all files with extension .tmp)

DEL /F * (Delete all files including any that are read only)

TYPE nul > file.txt (Use this command before DEL to clear all contents before deleting the file for safety purpose, since third-party utilities can undelete your files)

DIR – List files and folders in current directory

DIR /P or DIR | MORE (Pause after each screen of data)

DIR/A:H (Show all hidden files)

/O:S (Sort ascending by file size)

/O:-D (Sort descending by date)

/S Include all sub-folders

DISKPART – Manage disk partitions

DOSKEY – Edit command line, recall commands, and create macros

DRIVERQUERY – List installed device drivers

Tip: If the file or folder name contains a space, you must use it within inverted commas, like "D:\My Pictures"

ECHO – Display message on screen. Or turn command echoing on or off

ECHO (Show current echo setting)

ECHO ON or OFF (Turn echoing on or off)

ECHO How are you? (Display a text message)

ENDLOCAL – End localisation of environment changes in a batch file

ERASE – Deletes one or more files

See **DEL**)

EVENTCREATE – Add a message to the Windows event log

EXIT – Close Command Prompt or quite current script or routine

EXPAND – Uncompress one or more specified files

FC – Compare two or more files and show difference between them

FC /B “file1.txt” “file2.txt” (Perform a binary comparison)

/C (Case sensitive string comparison)

/A (Displays only first and last line of each set of differences)

/U (Compare as UNICODE text files)

/L (Compare as ASCII text – this is default)

/N (Display line numbers – for ASCII only)

/LB50: (Show maximum first 50 differences only)

FIND – Search for a text string in a files or files

FIND “text to find”

/V (Display all lines NOT containing the specified string)

/C (Count the number of lines containing the string)

/N (Display Line numbers)

/I (Ignore the case of characters)

TYPE myfile.txt | FIND “” /v /c (Count number of lines in a file)

FINDSTR – Search for strings in files.

FOR /F – Loops specified command for each file in a set of files.

FORFILES – Batch process multiple files

FORMAT – Format a disk

FORMAT X: /Q (Quick format drive X)

/FS:NTFS or /FS:FAT (Specify the file system)

/V:MyBackup (Specify volume label)

FSUTIL – File and Volume utilities

FTP – File Transfer Protocol

FTYPE – File extension file type associations

FTYPE MyFiletype="E:\Projects\MyApp.exe"

ASSOC .xxx=MyFiletype (The FileType should always be created before making a File Association)

GOTO – Direct a batch program to jump to a labelled line

GPRESULT – Displays Group Policy information for machine or user

HELP – See help on Windows Command(s)

HELP

HELP DIR (See help on specific command)

HOSTNAME – Display the name of the computer

ICACLS – Change file permissions

IF – Perform conditional processing in a batch program

IF EXIST "file.txt" START "file.txt"

IF NOT EXIST "file.txt" ECHO The file doesn't exist.

IPCONFIG – Configure IP

IPCONFIG /FLUSHDNS (Purge the DNS Resolver cache)

LABEL – Display or change label of disk.

LOGMAN – Manage Performance Monitor

LOGOFF – Log off Windows user — Be careful!

MAKECAB – Create .CAB files

MD – Create a new directory

MD "Alpha" "Beta" "Gamma" (Make multiple folders at once)

MD "Alpha\Beta\Gamma" (Make an entire path)

MKDIR – Create a new directory

See **MD**

MODE – Configure system devices

MORE – Display output one screen at a time. For example, DIR /S | MORE

DIR | MORE (Can be used with any command or batch program)

MORE < "file.txt" (Display a file)

/E /C (Clear screen before displaying page)

MOVE – Move or rename files and directories.

MOVE "oldfile.txt" "newfile.txt" >nul (Move quietly without feedback on screen)

MOVE "D:\filename.txt" (Move the file to current folder)

/Y (Suppress confirmation prompt)

MSG – Send message to a user

MSG JIGNESH "Hi!" (Send message to a user of current domain/server)

MSG * "Hi!" (Send message to all!)

/SERVER:ServerName (The server to contact (default is current))

/V (Verbose, display extra information)

/W (Wait for response from user, useful with /V)

MSG JIGNESH (If no message text to send is specified, MSG will prompt for it)

MSIEXEC – Start Windows installer/setup

MSINFO32 – Display system information (opens a new dialogue)

MSTSC – Start terminal server connection (remote desktop)

NET – Manage network resources

NETSH – Configure Network Interfaces, Windows Firewall & Remote access

NETSTAT – Display networking statistics, connection details (TCP/IP)

NSLOOKUP – Verify DNS name resolution for a host

PATH – Display or set a search path for executable files

PATH D:\MyApps; E:\MyApps;

PATH ; (Clear all paths)

PAUSE – Suspend processing of a batch file and display a message

PAUSE >nul (To suppress the message 'Press any key to continue...')

Echo Press any key to exit

PAUSE >nul (Display a different message)

PERFMON – Start performance monitor

PING – Test a network connection

PING techforworld.com

POPD – Return to a previous directory saved using PUSHHD command

POWERCFG – Configure power settings

PRINT – Print a text file using a printer device

PRINT "file.txt"

PRINT /D:LPT1 or /D:COM1 (Specify printer device)

PROMPT – Change the cmd.exe command prompt text

PUSHD – Stores the current directory for use by the POPD command

QUERY PROCESS – Display processes

QUERY SESSION – Display all sessions

QUERY TERMSERVER – List all servers

QUERY USER – Display user sessions

RASDIAL – Manage remote access service (dial-up) connections

RASPHONE – Manage remote access service (dial-up) connections

RD – Delete folder(s)

RD "D:\Temp files" (Will delete only if the folder is empty)

/S (Delete all files, tree of subfolders and folder itself)

/Q (Delete silently – don't display Y/N confirmation)

RD D:\Temp1 D:\Temp2 "D:\Temp 3" (Delete multiple folders)

RECOVER – Recover a damaged file from a defective disk

REG – View, add, delete, change or export Registry key or key values

REGSVR32 – Register or unregister a DLL file

REM – Add comments/remarks in a batch file. This can also be done using double colons (::)

REM This is a comment.

:: This is another comment.

REN – Renames a file or files

REN:

REN old.txt new.txt

REN * *.txt (Rename extension of all files)

REN * *.bak (Append extra extension to every file, E.g. file.txt.bak)

RENAME – Renames a file or files

See **REN**

REPLACE – Replace files

REPLACE D:\backup\file.txt E:\documents

/R (Replace read-only files as well)

/U (Updates files that are only older than source files.)

/S (Replace all subfolders of the destination)

/P (Prompt for confirmation for each file)

RMDIR – Removes a directory

See **RD**

ROBOCOPY – Advanced utility to copy files and folder trees

ROBOCOPY \\Server1\reports \\Server2\backup

/E (Include subfolders)

/COPYALL (Copy all file info like attributes, timestamps, security info, owner info)

/NOCOPY (Don't copy file info)

/MOVE (Delete files and folders from source after copying)

/Z (Restrtable mode, survive network glitch)

/PURGE (Delete destination files that no longer exist in source)

/MIR (Mirror a directory tree – equivalent to /PURGE and /E)

/LOG:report.txt (Output progress to a log file)

ROUTE – Manipulate network routing tables

RUNAS – Execute a program under a different user name

RUNAS /user:TechForWorld\Jignesh "program.exe" (Run a program as a specified domain user)

SC – Displays or configures services (background processes)

SCHTASKS – Schedule a command or task to run at a specific time

SCHTASKS /Query (See all scheduled tasks)

SCHTASKS /Create /SC weekly /D MON,TUE,WED,THU,FRI /TN MyDailyBackup /ST 23:00 /TR c:\backup.cmd /RU MyDomain\MyLogin /RP MyPassword (Create a task to run at 11 pm every weekday)

SCHTASKS /Delete /TN "MyDailyBackup" /F (Delete a task)

SCHTASKS /create /TN "My Script" /TR "%c:\my folder\script.cmd" arguments" /sc daily /sd 12/29/2014 /st 17:00 (Create a daily task to run a script at 5 pm)

SCHTASKS /Run [Connect_Options] /TN taskname (Run a task on demand)

Please note that task scheduler options are stored in Windows Registry at

HKLM\SOFTWARE\Microsoft\SchedulingAgent\

SET – Display, set, or remove Command Prompt environment variables

SET X=Some Value (Set a value to X)

SET X (Display value of X)

SETLOCAL – Begins localization of environment changes in a batch file

SETX – Set environment variables

SFC – System file checker

SFC /SCANNOW (Scan and repair all protected system files immediately)

/SCANONCE (Scan all system files once you restart the computer. The SfcScan DWORD value is set to 2 in the following registry key HKEY_LOCAL_MACHINE\SOFTWARE\Microsoft\Windows NT\CurrentVersion\Winlogon)

/SCANBOOT (Scan all protected system files every time you start your computer. The SfcScan DWORD value is set to 1 in the following registry key HKEY_LOCAL_MACHINE\SOFTWARE\Microsoft\Windows NT\CurrentVersion\Winlogon)

/REVERT (Return scan to default setting)

Note: SFC may require Windows installation files

SHIFT – Shift the position of batch file parameters

SHUTDOWN – Shutdown the computer

SHUTDOWN (Show help about command)

/I (Display graphical user interface)

/S (Shutdown)

/R (Shutdown and restart)

/A (Abort shutdown)

/P (Turn off without any warning or timeout. Use with /D)

/H (Hibernate. Use with /F)

/F (Force to close all applications. You may lose unsaved data!)

SLMGR – Software Licensing Management

SORT – Sort input text

START – Start a program, command or a batch program

START C:\MyApp\App.exe

START "" "C:\Program Files\MyApp\App.exe" "Parameter 1" (For long file name formats. First parameter is Window title!)

"C:\Program Files\MyApp\App.exe" "Parameter 1" (This also works!)

START CALC (Start can be used with various Windows functions)

/MIN (Start window minimized. Default is normal window)

/MAX (Start window maximized)

/WAIT (Start the application and wait for it to terminate)

SUBST – Associate a network or local path with a (virtual) drive letter

SUBST (List all virtual drivers)

SUBST X: \\Server1\Share\Folder1 (Set a path as virtual drive X:)

SUBST X: /D (Delete the substituted (virtual) drive)

SYSTEMINFO – List system configuration

TAKEOWN – Take ownership of a file

TASKLIST – List running applications and services in Windows

TASKKILL – Terminate a running process/task

TIME – Display or set the system time

TIME 13:54 (Set the new time)

TIME /T (Only output the current time without asking new time)

TIMEOUT – Wait for specified seconds or until any key is pressed. For use within a batch program.

TITLE – Set the window title for a CMD.EXE session

TRACERT – Trace route (find IP address) to a remote host

TRACERT TechForWorld.com

TREE – Graphical display of directory structure of a folder or a drive

TREE | MORE (Show tree for current directory. Pause after each screen)

TREE "D:\Games" | MORE (Show tree for specified path)

TREE > "D:\Tree.txt" (Save a tree structure to file)

TSDISCON – Disconnect a Remote Desktop Session

TYPE – Display the contents of a text file

TYPE "D:\file.txt" | MORE (Display output on screen, pause after each screen)

TYPE "D:\file.txt" > NewFile.txt (Copy content to a new file)

TYPE "D:\file.txt" >> ExistingFile.txt (Overwrite content to an existing file)

TYPE nul > file.txt (Create a zero byte (empty) file)

TYPEPERF – Write performance data to a log file or window

VER – Display operating system version information

VERIFY – Verify that your files are written correctly to the disk

VERIFY (Display current verify status)

VERIFY ON or VERIFY OFF (Turn file verification on or off)

By default the Command Prompt has verify OFF. Windows Explorer will always copy with verify ON.

VOL – Display the disk volume label and its serial number

WAITFOR – Wait for or send a signal

WEVTUTIL – Clear event logs, enable/disable/query logs

WHERE – Search for files in a directory tree

WHERE /R D:\ Tech (Find all files named tech in drive D: and all sub-folders)

WHERE /R D:\ *.txt (Find all txt files)

/R (Search recursively in sub-folders too)

/F (Display files in quotation marks)

/T (Display size and timestamp info of files)

WHOAMI – Display current user-name with domain name

WINRM – Windows Remote Management

WINRS – Windows Remote Shell

WMIC – WMI Commands

WUAUCLT – Windows Update

XCOPY – Copy files and directory trees

XCOPY "D:\file.txt" "E:\Backup" (Copy a file to a location)

XCOPY "D:\My Files*" "E:\Backup" /S /I (Copy a folder including all subfolders)

Please note that in many cases the functionality of XCOPY is superseded by ROBOCOPY.

> – Save a command's output to a file.

SYSTEMINFO > D:\MyPCinfo.txt.

HELP > D:\CmdList.txt

FOR MORE HELP, VISIT [TECHFORWORLD.COM](https://www.techforworld.com)